

Arbutus Rd between Gordon Head Rd and Finnerty Rd

March 03, 2020 To March 05, 2020



The data presented here is for information purposes only and should not be considered authoritative for construction, geotechnical, engineering, navigational, legal, or other site-specific uses. The information shared is owned by the Transportation Division of the Engineering Department at the District of Saanich. Accuracy is not guaranteed.

Start Date: 2-Mar-20
 Start Time: 0:06
 Station ID: C0002-02

Location 1: Arbutus Rd between Gordon Head Rd and Finnerty Rd

Note:

DATE:	March 2, 2020		March 3, 2020		March 4, 2020		March 5, 2020		March 6, 2020		WK AVG		WK AVG	HOURLY
	MON		TUE		WED		THURS		FRI				CH 1+2	%
Time:	NB	SB	NB	SB	NB	SB	NB	SB	NB	SB	NB	SB		
12-1 AM			6	5	9	4	8	3			8	4	12	0.3%
1-2 AM			3	1	1	3	3	4			2	3	5	0.1%
2-3 AM			3	1	3	3	2	1			3	2	4	0.1%
3-4 AM			1	2	1	1	1	0			1	1	2	0.0%
4-5 AM			4	0	3	1	4	1			4	1	4	0.1%
5-6 AM			13	12	8	12	10	13			10	12	23	0.6%
6-7 AM			17	22	28	21	25	26			23	23	46	1.2%
7-8 AM			66	141	62	136	76	129			68	135	203	5.1%
8-9 AM			147	344	164	372	161	335			157	350	508	12.6%
9-10 AM			106	143	118	165	101	160			108	156	264	6.6%
10-11 AM			99	116	123	119	95	100			106	112	217	5.4%
11-12 PM			105	107	137	130	149	138			130	125	255	6.3%
12-1 PM			135	125	139	127	121	121			132	124	256	6.4%
1-2 PM			131	115	139	141	146	115			139	124	262	6.5%
2-3 PM			178	138	182	131	151	129			170	133	303	7.5%
3-4 PM			196	140	252	154	208	157			219	150	369	9.2%
4-5 PM			267	124	265	151	234	129			255	135	390	9.7%
5-6 PM			193	123	202	139	162	124			186	129	314	7.8%
6-7 PM			108	116	101	79	91	88			100	94	194	4.8%
7-8 PM			67	57	50	54	74	68			64	60	123	3.1%
8-9 PM			63	42	52	50	61	43			59	45	104	2.6%
9-10 PM			44	38	46	41	56	49			49	43	91	2.3%
10-11 PM			27	20	28	18	22	23			26	20	46	1.1%
11-12 AM			17	15	11	10	13	9			14	11	25	0.6%
LANES			1996	1947	2124	2062	1974	1965			2031	1991	4023	100.0%
TOTAL			3943		4186		3939				4030			
	MON		TUE		WED		THURS		FRI		WK AVG			

PEAK HOUR					TOTAL VEHICALS-PEAK PERIODS		2 HOUR PEAK INTERVALS				
MAX. 7 - 9 am PEAK HOUR	508	⇒	12.6%	between 8-9 AM	1927	⇒	6 HR TOTAL	2 HR AM (7 - 9 AM)			
MAX. 7 - 11 am PEAK HOUR	508	⇒	12.6%	between 8-9 AM	1415	⇒	4 HR TOTAL	VEH / HR	VEH / 2HR	2 HR %	
MAX. 11 am - 1 pm PEAK HOUR	256	⇒	6.4%	between 12-1 PM				7-8 AM	203	711	17.7%
MAX. 11 am - 3 pm PEAK HOUR	303	⇒	7.5%	between 2-3 PM				8-9 AM	508		
MAX. 4 - 6 pm PEAK HOUR	390	⇒	9.7%	between 4-5 PM				2 HR NOON (11 - 1 PM)			
MAX. 3 - 6 pm PEAK HOUR	390	⇒	9.7%	between 4-5 PM				VEH / HR	VEH / 2HR	2 HR %	
								11-12 PM	255	511	12.7%
								12-1 PM	256		
								2 HR PM (4 - 6 PM)			
								VEH / HR	VEH / 2HR	2 HR %	
								4-5 PM	390	704	17.5%
								5-6 PM	314		

Arbutus Rd between Gordon Head Rd and Finnerty Rd

Northbound

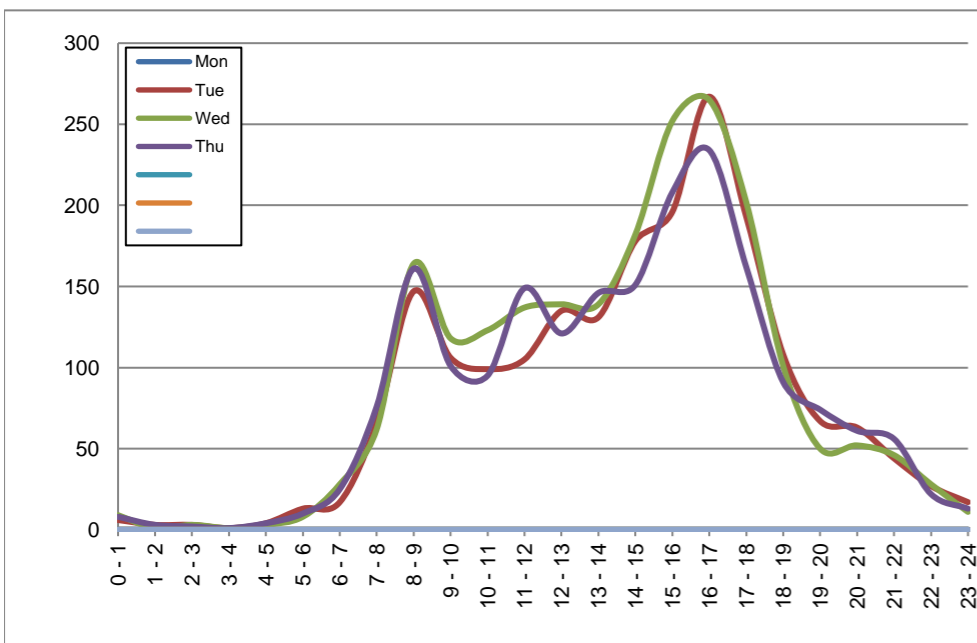
March 2, 2020 to March 5, 2020

Hourly Volumes

Time Period	Mon Mar 2	Tue Mar 3	Wed Mar 4	Thu Mar 5
0 - 1		6	9	8
1 - 2		3	1	3
2 - 3		3	3	2
3 - 4		1	1	1
4 - 5		4	3	4
5 - 6		13	8	10
6 - 7		17	28	25
7 - 8		66	62	76
8 - 9		147	164	161
9 - 10		106	118	101
10 - 11		99	123	95
11 - 12		105	137	149
12 - 13		135	139	121
13 - 14		131	139	146
14 - 15		178	182	151
15 - 16		196	252	208
16 - 17		267	265	234
17 - 18		193	202	162
18 - 19		108	101	91
19 - 20		67	50	74
20 - 21		63	52	61
21 - 22		44	46	56
22 - 23		27	28	22
23 - 24		17	11	13
Day Total		1996	2124	1974

15-Minute Volumes

Time Start	Mon Mar 2	Tue Mar 3	Wed Mar 4	Thu Mar 5	
0:00		4	2	5	
0:15		0	5	1	
0:30		0	2	1	
0:45		2	0	1	
1:00		3	0	2	
1:15		0	0	0	
1:30		0	1	1	
1:45		0	0	0	
2:00		1	0	1	
2:15		0	0	0	
2:30		1	3	0	
2:45		1	0	1	
3:00		0	0	0	
3:15		0	0	0	
3:30		1	0	1	
3:45		0	1	0	
4:00		0	0	0	
4:15		1	0	3	
4:30		2	1	1	
4:45		1	2	0	
5:00		3	0	1	
5:15		5	5	2	
5:30		1	3	1	
5:45		4	0	6	
6:00		5	2	6	
6:15		0	6	1	
6:30		5	11	11	
6:45		7	9	7	
7:00		9	7	8	
7:15		18	12	20	
7:30		18	20	24	
7:45		21	23	24	
8:00		22	28	37	
8:15		32	44	42	
8:30		48	51	50	
8:45		45	41	32	
9:00		24	29	22	
9:15		22	29	21	
9:30		32	28	18	
9:45		28	32	40	
10:00		21	22	24	
10:15		33	25	27	
10:30		29	38	19	
10:45		16	38	25	
11:00		18	31	33	
11:15		25	29	38	
11:30		27	43	44	
11:45		35	34	34	
12:00			37	37	20
12:15			28	35	34
12:30			34	35	32
12:45			36	32	35
13:00			30	27	33
13:15			31	33	42
13:30			41	43	35
13:45			29	36	36
14:00			31	27	27
14:15			47	41	38
14:30			49	54	49
14:45			51	60	37
15:00			71	69	49
15:15			34	57	58
15:30			48	67	65
15:45			43	59	36
16:00			63	68	58
16:15			62	58	55
16:30			76	67	77
16:45			66	72	44
17:00			58	75	50
17:15			44	43	38
17:30			48	50	40
17:45			43	34	34
18:00			34	31	24
18:15			25	27	23
18:30			31	21	20
18:45			18	22	24
19:00			17	14	18
19:15			20	17	21
19:30			18	10	14
19:45			12	9	21
20:00			22	18	16
20:15			14	10	14
20:30			10	14	11
20:45			17	10	20
21:00			15	13	19
21:15			12	19	14
21:30			13	8	14
21:45			4	6	9
22:00			8	7	6
22:15			6	5	8
22:30			7	9	4
22:45			6	7	4
23:00			5	1	6
23:15			5	4	3
23:30			2	4	3
23:45			5	2	1



Site notes:

Arbutus Rd between Gordon Head Rd and Finnerty Rd

Southbound

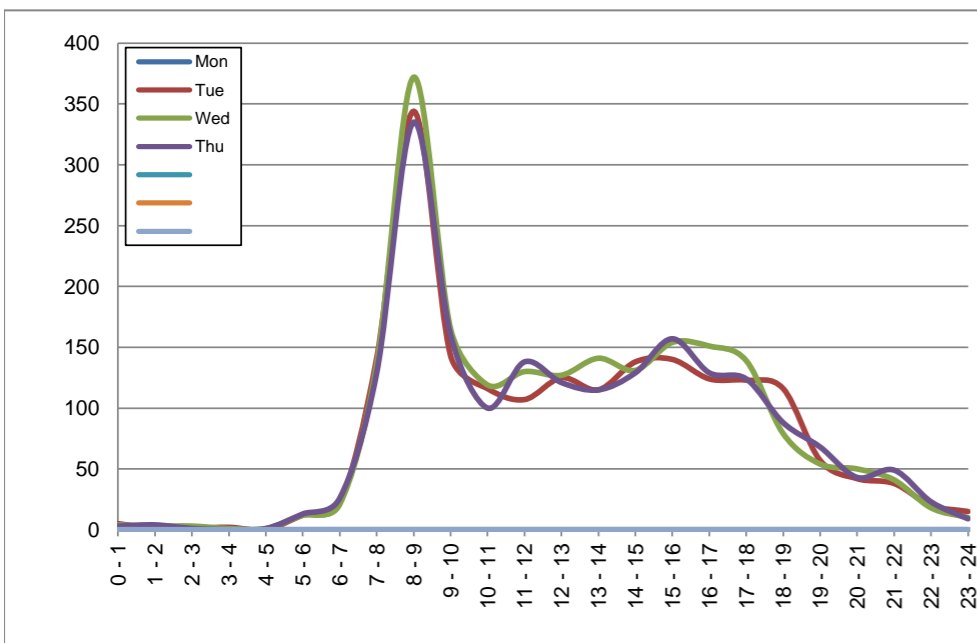
March 2, 2020 to March 5, 2020

Hourly Volumes

Time Period	Mon Mar 2	Tue Mar 3	Wed Mar 4	Thu Mar 5
0 - 1		5	4	3
1 - 2		1	3	4
2 - 3		1	3	1
3 - 4		2	1	0
4 - 5		0	1	1
5 - 6		12	12	13
6 - 7		22	21	26
7 - 8		141	136	129
8 - 9		344	372	335
9 - 10		143	165	160
10 - 11		116	119	100
11 - 12		107	130	138
12 - 13		125	127	121
13 - 14		115	141	115
14 - 15		138	131	129
15 - 16		140	154	157
16 - 17		124	151	129
17 - 18		123	139	124
18 - 19		116	79	88
19 - 20		57	54	68
20 - 21		42	50	43
21 - 22		38	41	49
22 - 23		20	18	23
23 - 24		15	10	9
Day Total		1947	2062	1965

15-Minute Volumes

Time Start	Mon Mar 2	Tue Mar 3	Wed Mar 4	Thu Mar 5	
0:00		0	2	2	
0:15		3	1	0	
0:30		0	1	0	
0:45		2	0	1	
1:00		1	0	2	
1:15		0	3	1	
1:30		0	0	1	
1:45		0	0	0	
2:00		0	1	0	
2:15		0	0	0	
2:30		1	1	1	
2:45		0	1	0	
3:00		0	0	0	
3:15		1	1	0	
3:30		1	0	0	
3:45		0	0	0	
4:00		0	1	0	
4:15		0	0	1	
4:30		0	0	0	
4:45		0	0	0	
5:00		1	0	0	
5:15		3	3	1	
5:30		6	3	5	
5:45		2	6	7	
6:00		6	1	5	
6:15		4	3	7	
6:30		7	9	6	
6:45		5	8	8	
7:00		25	17	11	
7:15		24	29	26	
7:30		43	40	40	
7:45		49	50	52	
8:00		88	92	91	
8:15		114	128	102	
8:30		74	81	79	
8:45		68	71	63	
9:00		55	44	44	
9:15		40	51	34	
9:30		27	28	42	
9:45		21	42	40	
10:00		30	26	26	
10:15		31	34	23	
10:30		27	27	30	
10:45		28	32	21	
11:00		25	27	40	
11:15		26	30	36	
11:30		24	27	32	
11:45		32	46	30	
12:00			30	25	25
12:15			30	34	23
12:30			22	27	37
12:45			43	41	36
13:00			30	35	29
13:15			26	29	18
13:30			23	42	29
13:45			36	35	39
14:00			27	36	36
14:15			22	24	26
14:30			35	28	27
14:45			54	43	40
15:00			44	39	47
15:15			37	38	47
15:30			28	36	29
15:45			31	41	34
16:00			27	42	36
16:15			32	37	30
16:30			44	31	37
16:45			21	41	26
17:00			40	55	44
17:15			36	35	30
17:30			24	25	30
17:45			23	24	20
18:00			38	27	35
18:15			30	21	22
18:30			21	19	20
18:45			27	12	11
19:00			14	17	14
19:15			18	13	17
19:30			12	13	15
19:45			13	11	22
20:00			8	15	7
20:15			13	15	13
20:30			9	3	7
20:45			12	17	16
21:00			8	16	19
21:15			9	7	10
21:30			8	10	9
21:45			13	8	11
22:00			10	8	6
22:15			2	2	7
22:30			4	4	5
22:45			4	4	5
23:00			6	4	0
23:15			4	2	4
23:30			2	4	1
23:45			3	0	4



Site notes:

Vehicle Speed Summary

Saanich Engineering Department

Count Id: [C0002-02](#)

Filename: [Arbutus Rd between Gordon Head Rd and Finnerty Rd-Mar-2020.xlsm](#)

Location: Arbutus Rd between Gordon Head Rd and Finnerty Rd

Note:

Direction: **North-South**

Dates: **March 03, 2020 To March 05, 2020**

Filtered data

AVG. SPEED	29 mph	47 km/h
50 % SPEED	30 mph	48 km/h
85 % SPEED	34 mph	55 km/h
95 % SPEED	37 mph	59 km/h

Location Map



Arbutus Rd between Gordon Head Rd and Finnerty Rd

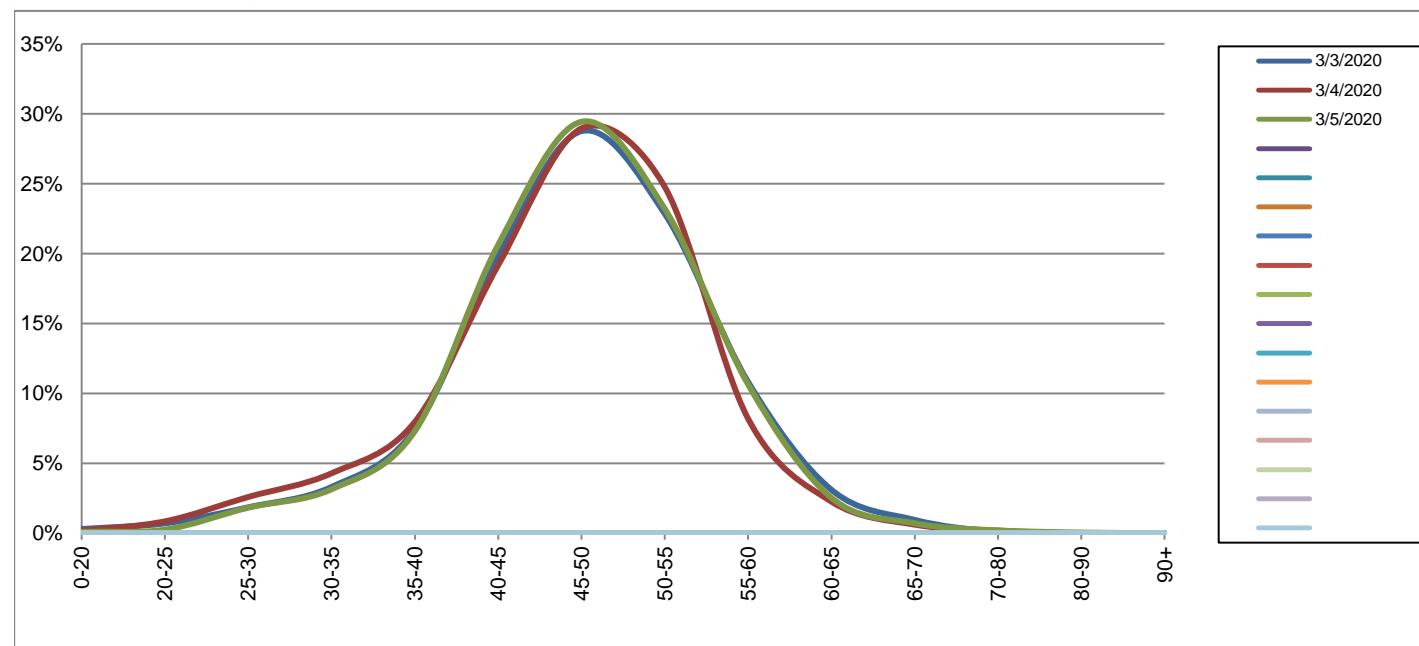
Northbound

March 3, 2020 to March 5, 2020

Daily Speed Bin Percentages															Daily Speed Bin Volumes														Total	Avg.
Bin #	1	2	3	4	5	6	7	8	9	10	11	12	13	14	1	2	3	4	5	6	7	8	9	10	11	12	13	14	Volume	Speed
Bin Speeds	0-20	20-25	25-30	30-35	35-40	40-45	45-50	50-55	55-60	60-65	65-70	70-80	80-90	90+	0-20	20-25	25-30	30-35	35-40	40-45	45-50	50-55	55-60	60-65	65-70	70-80	80-90	90+		
3/3/2020	0.3%	0.7%	1.9%	3.3%	7.4%	19.8%	28.8%	22.8%	10.8%	3.1%	1.0%	0.1%	0.0%	0.0%	6	14	37	66	148	396	574	456	216	62	19	2	0	0	1996	48
3/4/2020	0.2%	0.8%	2.6%	4.3%	8.0%	19.2%	29.0%	24.8%	8.2%	2.3%	0.6%	0.2%	0.0%	0.0%	4	18	55	91	169	407	615	526	174	48	13	4	0	0	2124	47
3/5/2020	0.1%	0.3%	1.8%	3.1%	7.3%	20.6%	29.4%	23.2%	10.6%	2.5%	0.7%	0.2%	0.1%	0.0%	2	5	36	62	144	407	581	458	210	50	14	4	1	0	1974	48
Total	0.2%	0.6%	2.1%	3.6%	7.6%	19.9%	29.0%	23.6%	9.8%	2.6%	0.8%	0.2%	0.0%	0.0%	12	37	128	219	461	1210	1770	1440	600	160	46	10	1	0	6094	47

Speed Data Summary

Bin #	1	2	3	4	5	6	7	8	9	10	11	12	13	14	Total
Bin Speeds	0-20	20-25	25-30	30-35	35-40	40-45	45-50	50-55	55-60	60-65	65-70	70-80	80-90	90+	
Survey Total	12	37	128	219	461	1210	1770	1440	600	160	46	10	1	0	6094
% Total	0.2%	0.6%	2.1%	3.6%	7.6%	19.9%	29.0%	23.6%	9.8%	2.6%	0.8%	0.2%	0.0%	0.0%	100%
Accumulated %	0.2%	0.8%	2.9%	6.5%	14.1%	33.9%	63.0%	86.6%	96.4%	99.1%	99.8%	100.0%	100.0%	100%	
Inverse Accum. %	99.8%	99.2%	97.1%	93.5%	85.9%	66.1%	37.0%	13.4%	3.6%	0.9%	0.2%	0.0%	0.0%	0.0%	
Average Speed	47 KM/H														



Site notes:

Arbutus Rd between Gordon Head Rd and Finnerty Rd

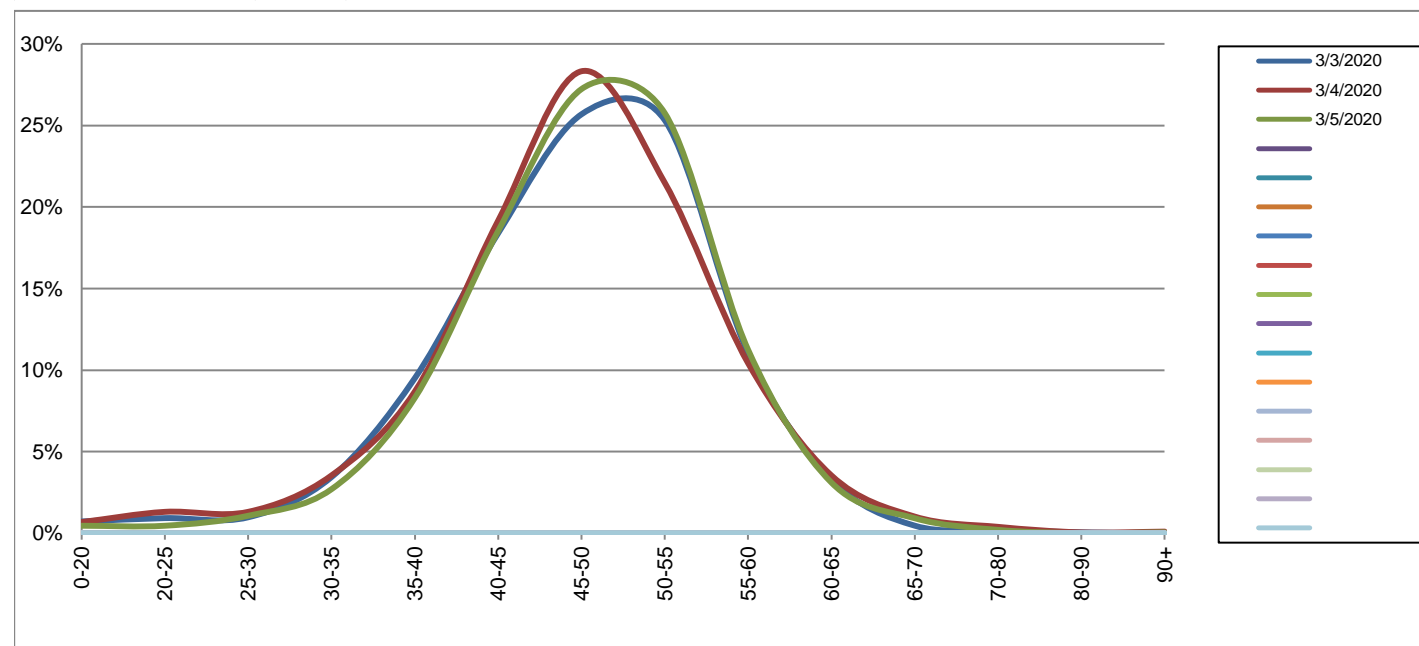
Southbound

March 3, 2020 to March 5, 2020

Daily Speed Bin Percentages															Daily Speed Bin Volumes														Total	Avg.
Bin #	1	2	3	4	5	6	7	8	9	10	11	12	13	14	1	2	3	4	5	6	7	8	9	10	11	12	13	14	Total	Avg.
Bin Speeds	0-20	20-25	25-30	30-35	35-40	40-45	45-50	50-55	55-60	60-65	65-70	70-80	80-90	90+	0-20	20-25	25-30	30-35	35-40	40-45	45-50	50-55	55-60	60-65	65-70	70-80	80-90	90+	Volume	Speed
3/3/2020	0.7%	0.9%	1.0%	3.4%	9.5%	18.4%	25.7%	25.3%	11.0%	3.3%	0.5%	0.2%	0.1%	0.0%	14	18	19	67	185	358	500	493	215	64	9	4	1	0	1947	47
3/4/2020	0.7%	1.3%	1.3%	3.5%	8.7%	19.2%	28.3%	21.5%	10.4%	3.5%	1.0%	0.4%	0.0%	0.1%	14	27	27	73	179	395	584	443	215	73	21	8	1	2	2062	47
3/5/2020	0.5%	0.5%	1.1%	2.7%	8.3%	18.5%	27.2%	25.8%	11.2%	3.1%	0.9%	0.2%	0.0%	0.1%	9	9	21	53	163	364	535	506	221	61	18	4	0	1	1965	48
Total	0.6%	0.9%	1.1%	3.2%	8.8%	18.7%	27.1%	24.1%	10.9%	3.3%	0.8%	0.3%	0.0%	0.1%	37	54	67	193	527	1117	1619	1442	651	198	48	16	2	3	5974	48

Speed Data Summary

Bin #	1	2	3	4	5	6	7	8	9	10	11	12	13	14	Total
Bin Speeds	0-20	20-25	25-30	30-35	35-40	40-45	45-50	50-55	55-60	60-65	65-70	70-80	80-90	90+	Total
Survey Total	37	54	67	193	527	1117	1619	1442	651	198	48	16	2	3	5974
% Total	0.6%	0.9%	1.1%	3.2%	8.8%	18.7%	27.1%	24.1%	10.9%	3.3%	0.8%	0.3%	0.0%	0.1%	100%
Accumulated %	0.6%	1.5%	2.6%	5.9%	14.7%	33.4%	60.5%	84.6%	95.5%	98.8%	99.6%	99.9%	99.9%	100%	
Inverse Accum. %	99.4%	98.5%	97.4%	94.1%	85.3%	66.6%	39.5%	15.4%	4.5%	1.2%	0.4%	0.1%	0.1%	0.0%	
Average Speed	48 KM/H														



Site notes:

Arbutus Rd between Gordon Head Rd and Finnerty Rd

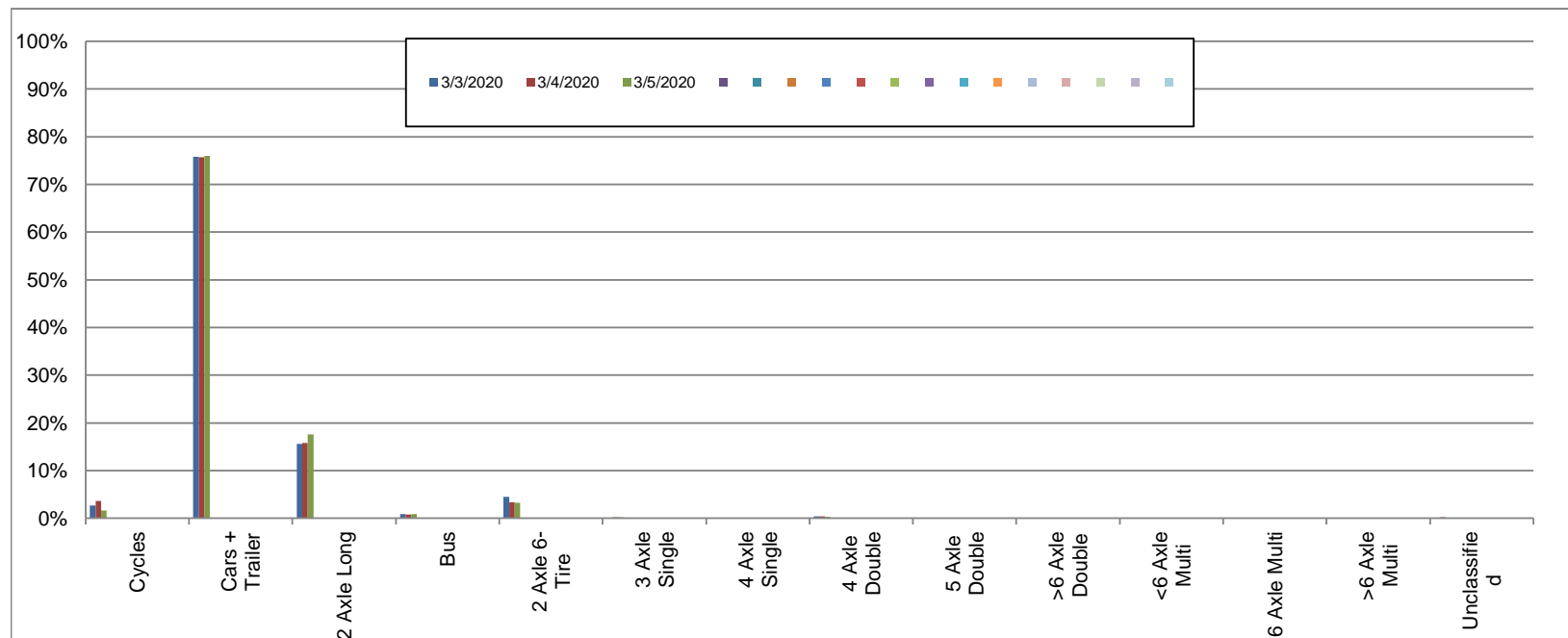
Northbound

March 3, 2020 to March 5, 2020

Daily Class Bin Percentages															Daily Class Bin Volumes											Total Volume				
Bin #	1	2	3	4	5	6	7	8	9	10	11	12	13	14	1	2	3	4	5	6	7	8	9	10	11		12	13	14	
Bin Class	Cycles	Cars + Trailer	2 Axle Long	Bus	2 Axle 6-Tire	3 Axle Single	4 Axle Single	4 Axle Double	5 Axle Double	>6 Axle Double	<6 Axle Multi	6 Axle Multi	>6 Axle Multi	Unclassified	Cycles	Cars + Trailer	2 Axle Long	Bus	2 Axle 6-Tire	3 Axle Single	4 Axle Single	4 Axle Double	5 Axle Double	>6 Axle Double	<6 Axle Multi	6 Axle Multi	>6 Axle Multi	Unclassified		
3/3/2020	2.7%	75.8%	15.6%	0.9%	4.5%	0.1%	0.1%	0.4%	0.0%	0.0%	0.0%	0.0%	0.0%	0.1%	54	1512	311	17	90	1	1	8	0	0	0	0	0	0	2	1996
3/4/2020	3.6%	75.7%	15.8%	0.8%	3.3%	0.2%	0.0%	0.4%	0.0%	0.0%	0.0%	0.0%	0.0%	0.2%	76	1608	335	17	70	4	0	9	0	0	0	0	0	0	5	2124
3/5/2020	1.7%	76.0%	17.6%	0.9%	3.2%	0.2%	0.0%	0.3%	0.0%	0.0%	0.0%	0.0%	0.0%	0.2%	33	1500	348	17	64	4	0	5	0	0	0	0	0	0	3	1974
Total	2.7%	75.8%	16.3%	0.8%	3.7%	0.1%	0.0%	0.4%	0.0%	0.0%	0.0%	0.0%	0.0%	0.2%	163	4620	994	51	224	9	1	22	0	0	0	0	0	10	6094	

Class Data Summary

Bin #	1	2	3	4	5	6	7	8	9	10	11	12	13	14	Total Volume
Bin Class	Cycles	Cars + Trailer	2 Axle Long	Bus	2 Axle 6-Tire	3 Axle Single	4 Axle Single	4 Axle Double	5 Axle Double	>6 Axle Double	<6 Axle Multi	6 Axle Multi	>6 Axle Multi	Unclassified	Total Volume
Survey Total	163	4620	994	51	224	9	1	22	0	0	0	0	0	10	6094
% Total	2.7%	75.8%	16.3%	0.8%	3.7%	0.1%	0.0%	0.4%	0.0%	0.0%	0.0%	0.0%	0.0%	0.2%	100%
Accumulated %	2.7%	78.5%	94.8%	95.6%	99.3%	99.5%	99.5%	99.8%	99.8%	99.8%	99.8%	99.8%	99.8%	100.0%	
Inv. Accum. %	97.3%	21.5%	5.2%	4.4%	0.7%	0.5%	0.5%	0.2%	0.2%	0.2%	0.2%	0.2%	0.2%	0.0%	



Classification Descriptions

Bin #	Bin Description
1	Motorcycles
2	Passenger cars, including those with recreational trailers
3	2-axle pick-ups, vans, and RVs, including those with recreational trailers
4	Buses
5	2-axle, 6-tire single units
6	3-axle single units
7	4-axle single units
8	3-axle or 4-axle double unit
9	5-axle double unit
10	6-, 7-, or 8-axle double unit
11	5-axle multiple unit
12	6-axle multiple unit
13	7-or-more-axle multiple unit
14	Vehicles that could not be classified

Site notes:

Arbutus Rd between Gordon Head Rd and Finnerty Rd

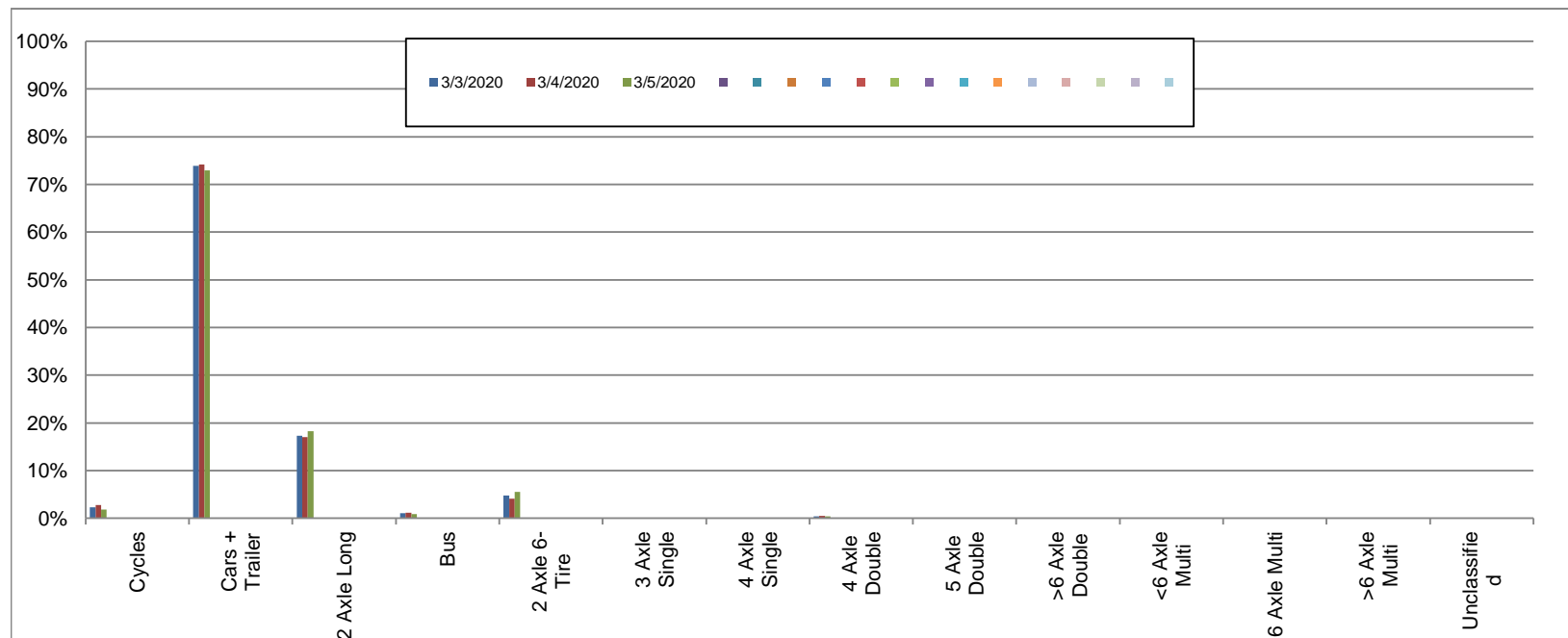
Southbound

March 3, 2020 to March 5, 2020

Daily Class Bin Percentages															Daily Class Bin Volumes														
Bin #	1	2	3	4	5	6	7	8	9	10	11	12	13	14	1	2	3	4	5	6	7	8	9	10	11	12	13	14	Total Volume
Bin Class	Cycles	Cars + Trailer	2 Axle Long	Bus	2 Axle 6-Tire	3 Axle Single	4 Axle Single	4 Axle Double	5 Axle Double	>6 Axle Double	<6 Axle Multi	6 Axle Multi	>6 Axle Multi	Unclassified	Cycles	Cars + Trailer	2 Axle Long	Bus	2 Axle 6-Tire	3 Axle Single	4 Axle Single	4 Axle Double	5 Axle Double	>6 Axle Double	<6 Axle Multi	6 Axle Multi	>6 Axle Multi	Unclassified	
3/3/2020	2.3%	73.9%	17.3%	1.1%	4.8%	0.2%	0.1%	0.4%	0.0%	0.0%	0.0%	0.0%	0.0%	0.1%	45	1438	337	21	93	3	2	7	0	0	0	0	0	1	1947
3/4/2020	2.8%	74.2%	17.0%	1.2%	4.1%	0.1%	0.0%	0.5%	0.0%	0.0%	0.0%	0.0%	0.0%	0.0%	58	1530	351	24	85	2	0	10	1	0	0	0	0	1	2062
3/5/2020	1.8%	73.0%	18.3%	0.9%	5.5%	0.0%	0.0%	0.4%	0.0%	0.0%	0.0%	0.0%	0.0%	0.2%	35	1434	359	18	108	0	0	8	0	0	0	0	0	3	1965
Total	2.3%	73.7%	17.5%	1.1%	4.8%	0.1%	0.0%	0.4%	0.0%	0.0%	0.0%	0.0%	0.0%	0.1%	138	4402	1047	63	286	5	2	25	1	0	0	0	0	5	5974

Class Data Summary

Bin #	1	2	3	4	5	6	7	8	9	10	11	12	13	14	Total Volume
Bin Class	Cycles	Cars + Trailer	2 Axle Long	Bus	2 Axle 6-Tire	3 Axle Single	4 Axle Single	4 Axle Double	5 Axle Double	>6 Axle Double	<6 Axle Multi	6 Axle Multi	>6 Axle Multi	Unclassified	Total Volume
Survey Total	138	4402	1047	63	286	5	2	25	1	0	0	0	0	5	5974
% Total	2.3%	73.7%	17.5%	1.1%	4.8%	0.1%	0.0%	0.4%	0.0%	0.0%	0.0%	0.0%	0.0%	0.1%	100%
Accumulated %	2.3%	76.0%	93.5%	94.6%	99.4%	99.4%	99.5%	99.9%	99.9%	99.9%	99.9%	99.9%	99.9%	100.0%	
Inv. Accum. %	97.7%	24.0%	6.5%	5.4%	0.6%	0.6%	0.5%	0.1%	0.1%	0.1%	0.1%	0.1%	0.1%	0.0%	



Classification Descriptions

Bin #	Bin Description
1	Motorcycles
2	Passenger cars, including those with recreational trailers
3	2-axle pick-ups, vans, and RVs, including those with recreational trailers
4	Buses
5	2-axle, 6-tire single units
6	3-axle single units
7	4-axle single units
8	3-axle or 4-axle double unit
9	5-axle double unit
10	6-, 7-, or 8-axle double unit
11	5-axle multiple unit
12	6-axle multiple unit
13	7-or-more-axle multiple unit
14	Vehicles that could not be classified

Site notes: